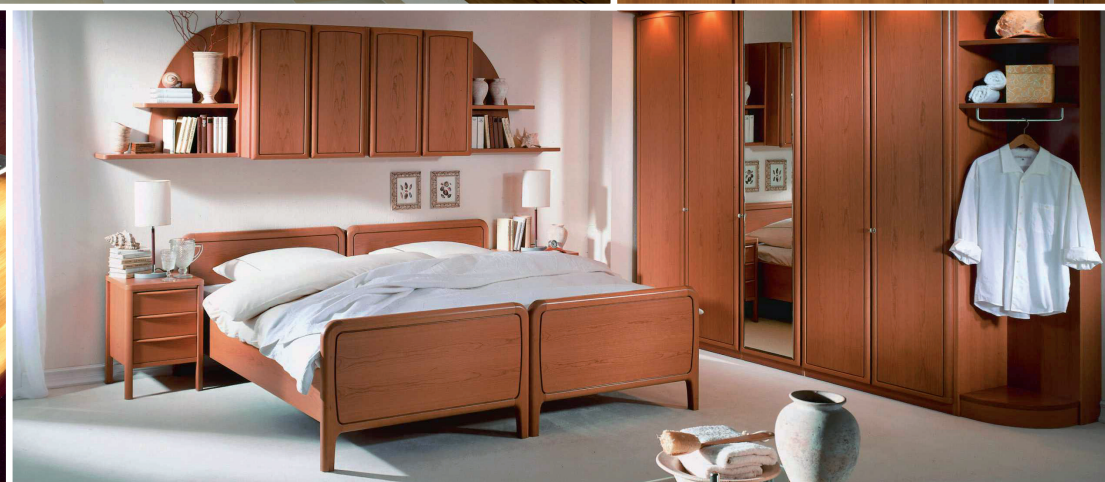


# SWL Ecos – for people and the environment

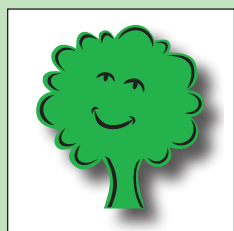
## SWL Ecos | application examples

SWL Ecos – ideal for the use in various different areas of habitation and in living together!



### Feelgood atmosphere guaranteed!

Wood-based materials return to their origin with the certified SWL Ecos. Perfectly processed by wood working experts present our boards the basis for a unique feel-good atmosphere in the most important household living areas.



### SWL Tischlerplatten Betriebs-GmbH

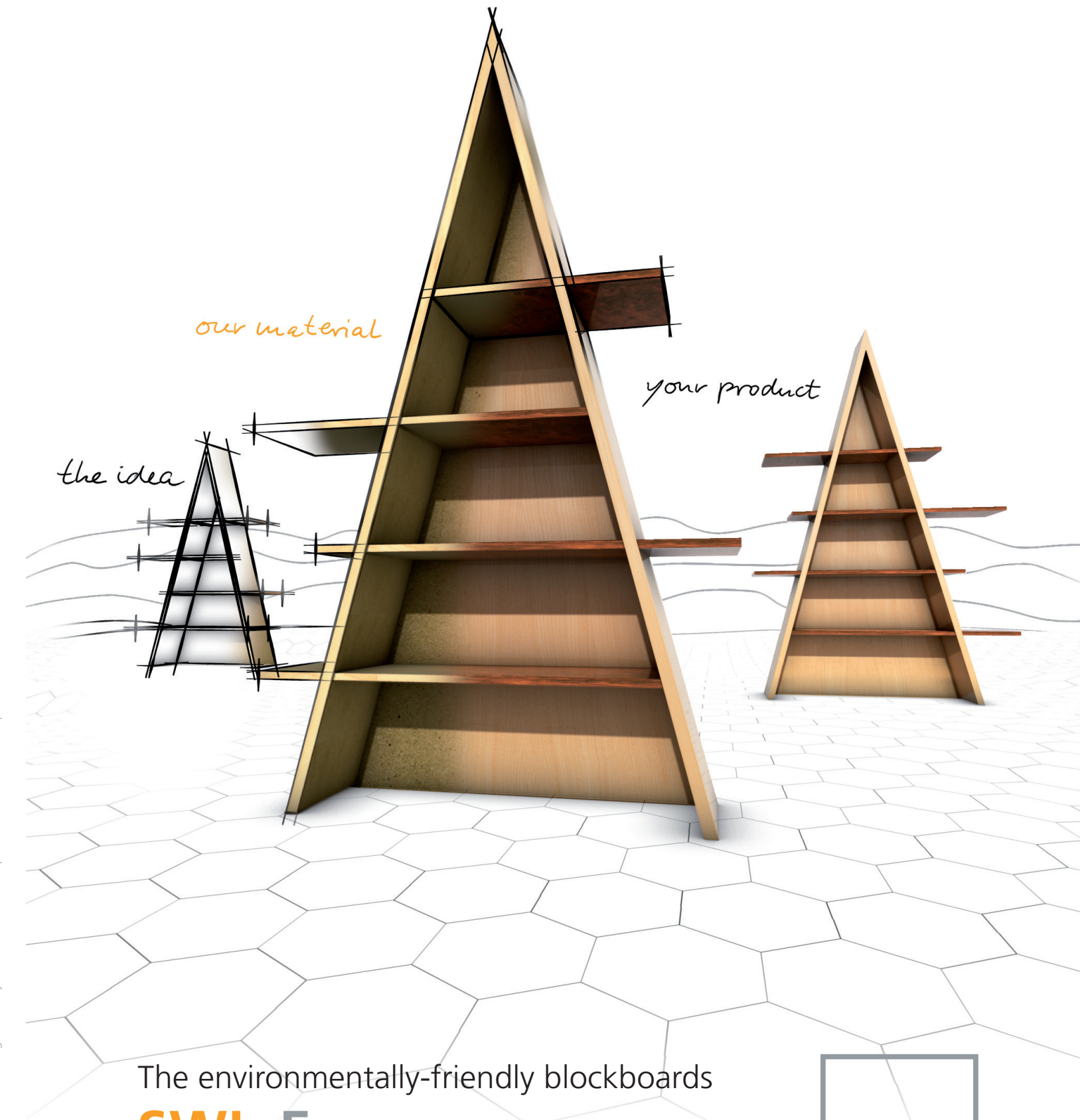
Lippstädter Str. 4  
D-33449 Langenberg

Phone +49 (0) 52 48 15 09 - 0  
Fax +49 (0) 52 48 115 91

Internet [www.s-w-l.com](http://www.s-w-l.com)  
E-mail [info@s-w-l.com](mailto:info@s-w-l.com)



Your specialist supplier



04-2017 Technical changes and any colour deviations are production-related. [www.q-medien.de](http://www.q-medien.de)

The environmentally-friendly blockboards

**SWL Ecos**

Certified sustainability





# SWL Eco's – eco-friendly materials!

## SWL Eco's | STAB

			
Product designation	STAB beech 3-ply	STAB poplar 3-ply	STAB eco
Crossband	Rotary cut veneer beech	Rotary cut veneer poplar	Hard fibre board
Standard formats (mm)	2,070 x 5,200 2,070 x 2,600 2,070 x 2,800	2,070 x 5,200 2,070 x 2,600 2,070 x 2,800	2,070 x 5,200 2,070 x 2,600 2,070 x 2,800
Max. press format (mm)	On request	On request	On request
Thicknesses (mm)	13 - 38	13 - 38	13 - 42
Certification	100 % PEFC™	FSC® mix credit	FSC® mix credit
Certificate			

## SWL Eco's | STAE

			
Product designation	STAE beech 3-ply	STAE poplar 3-ply	STAE eco
Crossband	Rotary cut veneer beech	Rotary cut veneer poplar	Hard fibre board
Standard formats (mm)	2,070 x 5,200 2,070 x 2,600 2,070 x 2,800	2,070 x 5,200 2,070 x 2,600 2,070 x 2,800	2,070 x 5,200 2,070 x 2,600 2,070 x 2,800 2,800 x 2,070
Max. press format (mm)	On request	On request	On request
Thicknesses (mm)	13 - 38	13 - 38	13 - 50
Certification	100 % PEFC™	FSC® mix credit	FSC® mix credit
Certificate			



## SWL Ecos | ecologically friendly

For people and the environment – ecological compatibility for use in sensitive areas!



**FSC®** – Certificate registration No.: TUVDC-COC-100829  
Products bearing the FSC® trademark contain wood from forests managed in an exemplary manner. Certification of forests is effected according to the guidelines of the Forest Stewardship Council®. Equal consideration to social, ecological and economic aspects in the use of natural resources has particular importance as part of the Rio demands.



**PEFC™** – Certificate registration No.: DC-COC-000829  
Operations certified according to PEFC™ demonstrate commitment to the environment and their responsibility in dealing with wood as an indispensable raw material. PEFC™ represents holistic sustainability: an integrative concept combining ecological, social and economic aspects. And PEFC™ is the guarantee of an audited processing chain, monitored independently, completely traceable and sustainable; from our certified forests, through wood processing operations to the end product on the shelf.

## Certified sustainability!

Preserving the environment is one of our most important goals. SWL blockboards therefore have the most prestigious certificates.

This applies to the sustainability of the raw materials we use as well as the particularly low emission of hazardous substances such as e.g. formaldehyde!

