



## **SWL Tischlerplatten Betriebs-GmbH**

Lippstädter Str. 4  
D - 33449 Langenberg

Phone +49 (0) 52 48 15 09 - 0

Fax +49 (0) 52 48 15 91

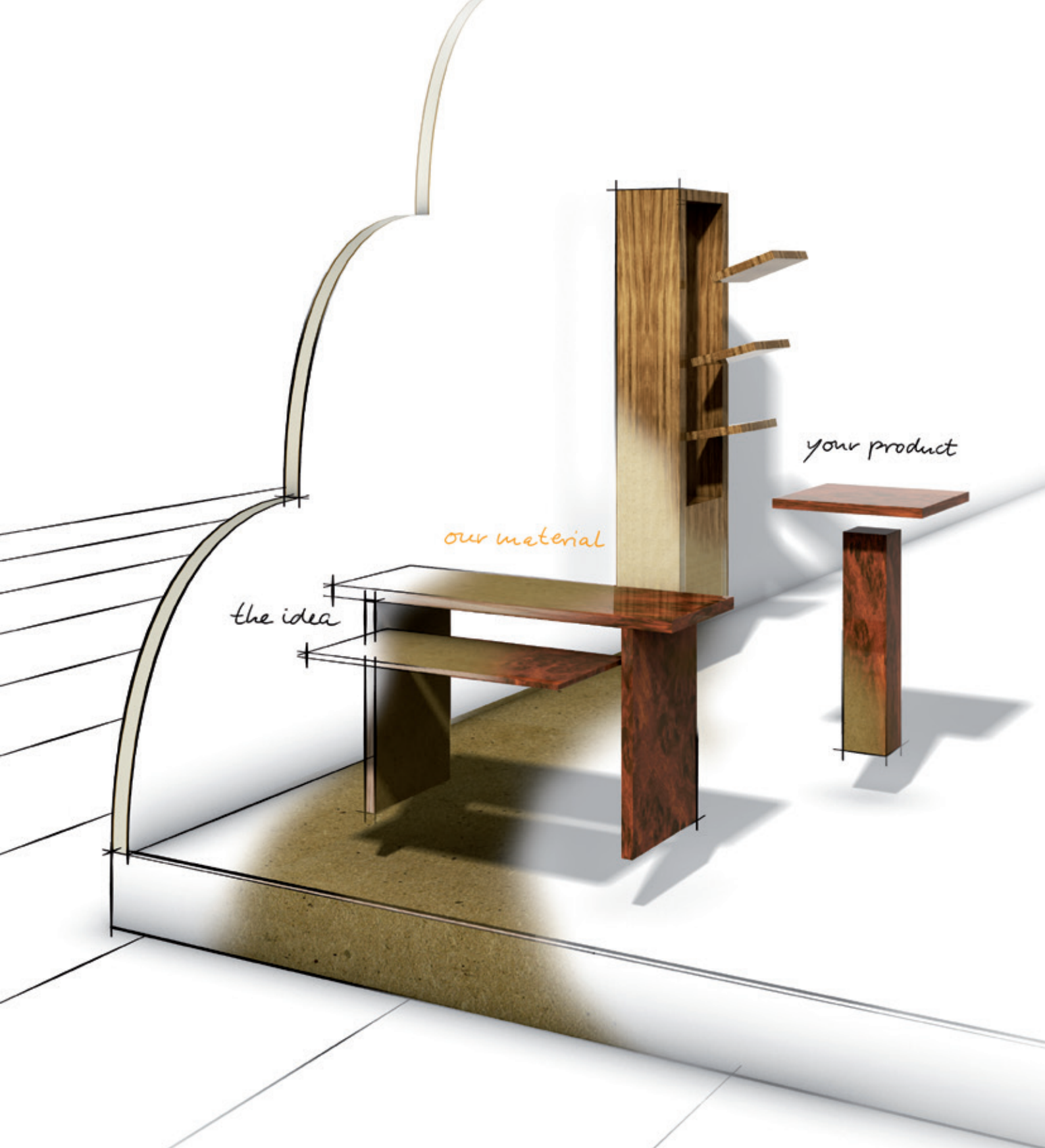
Internet [www.s-w-l.com](http://www.s-w-l.com)

E-mail [info@s-w-l.com](mailto:info@s-w-l.com)



Your specialist supplier

---



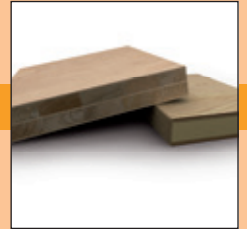
Ingenious lightweights

**SWL Light**

Weighty tasks... solved lightly



## SWL Light | finger-jointed light blockboards



For challenging performance requirements  
in various fields of application!



Blockboards made of  
the light and rapidly  
growing wood type  
**albasia falcata**  
guarantee absolutely  
smooth surfaces with  
low weight, high  
strength and screw  
withdrawal resistance!



### SWL STAB-light | the unique lightweight blockboard

- Finger-jointed
- Strong
- Screw withdrawal resistant



# SWL Light – ingenious lightweights

SWL PX elements – sandwich elements with polystyrene core

Completely new possibilities in exhibition, theatre and stage construction based on massive weight reduction and extremely easy handling!



## SWL PX elements | the lightweight material with impressive characteristics

- Universal use
- Easy 3D shaping
- Problem-free processing

The extremely light sandwich elements can be processed easily using conventional machines (edging, veneering).

Individual shaping is problem-free particularly due to the large board formats.

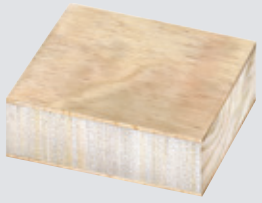

We also provide versions with frames.

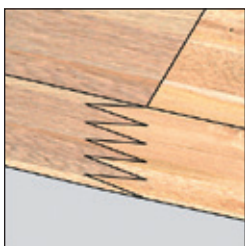




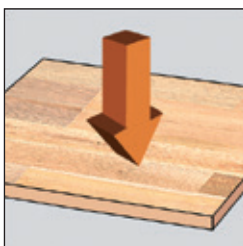
## SWL Light | finger-jointed light blockboards

			
<b>Product designation</b>	<b>STAB-light gabon or similar</b>	<b>STAB-light HDF</b>	<b>STAB-light hard fibre</b>
<b>Crossband</b>	gabon or similar	HDF (2.3 or 3.5 mm)	Hard fibre board (paintable)
<b>Core material</b>	Finger-jointed, core material sanded on both sides, made of albasia	Finger-jointed, core material sanded on both sides, made of albasia	Finger-jointed, core material sanded on both sides, made of albasia
<b>Standard formats (mm)</b>	2,070 x 5,200 2,070 x 2,600	5,200 x 2,070 2,600 x 2,070	5,200 x 2,070 2,600 x 2,070
<b>Max. press format (mm)</b>	On request	On request	On request
<b>Thicknesses (mm)</b>	13 - 38 (> 40 mm on request)	13 - 38 (> 40 mm on request)	13 - 38 (> 40 mm on request)
<b>Specific weight (kg/m³)</b>	Approx. 320	Approx. 460 at 19 mm Approx. 420 at 38 mm	Approx. 460 at 19 mm Approx. 420 at 38 mm

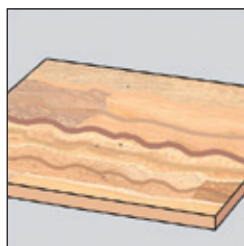
		
<b>Product designation</b>	<b>STAE-light</b>	<b>AeroSlide</b> (for large-size sliding doors)
<b>Crossband</b>	gabon or similar , HDF (2.3 or 3.5 mm)	HDF
<b>Core material</b>	Fully-bonded albasia rotary cut veneers with upright growth rings	Polystyrene: frame made of albasia and laminated wood
<b>Standard formats (mm)</b>	2,070 x 5,200 2,070 x 2,600	Individual
<b>Thicknesses (mm)</b>	13 - 38 (> 40 mm on request)	38
<b>Specific weight (kg/m³)</b>	Approx. 350	Approx. 9 kg/m²



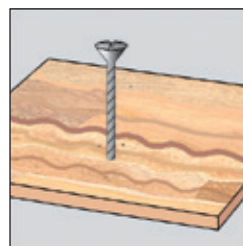
Finger-jointed core material



High strength  
(approx. 4,300 N/mm²)



Top swelling characteristics (2.3 %)



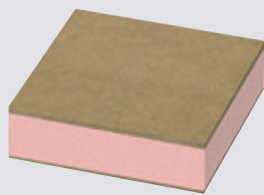
Unscrewing resistant  
(approx. 1,300 N/mm²)



Outstanding moulding properties

# SWL Light – lightweight materials

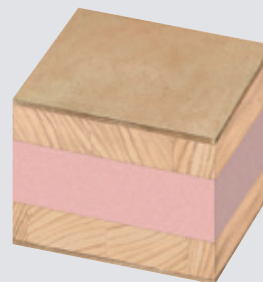
## SWL PX elements – sandwich elements with polystyrene core



**PX elements 3-ply**



**PX plywood**



**Sandwich board  
Varia**

HDF

plywood

HDF

Polystyrene: 300 - 500 kPa  
compression strength  
(on request)

Polystyrene: 300 - 500 kPa  
compression strength  
(on request)

Core XPS  
Finger jointed

5,200 x 2,070  
2,600 x 2,070

2,490 x 1,820

5,200 x 2,070

On request

On request

On request

19 - 100

19 - 100

40 I 50 I 60

Approx. 150 - 250

Approx. 100 - 200

Approx. 170 - 240

### Weights PX elements (approx. in kg/m²)

19 mm	19 mm*	22 mm	22 mm*	25 mm	28 mm	32 mm	35 mm	38 mm	45 mm
5.07	3.36	5.19	3.48	5.31	5.43	5.59	5.71	5.83	6.11

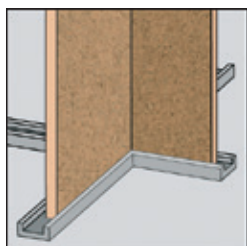
\* 2.3 mm HDF

### Weights STAB Light gabon or similar and STAB Light HDF (approx. in kg/m²)

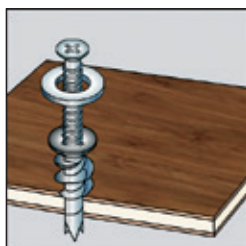
STAB-light gabon or similar STAB-light HDF	13 mm	16 mm	19 mm	22 mm	25 mm	28 mm	30 mm	38 mm	40 mm	42 mm
	4.16	5.12	6.08	7.04	8.00	8.96	9.60	12.16	12.80	13.44
	6.11	8.80	9.73	10.67	11.63	12.60	13.20	15.77	16.40	17.01

### Materials in weight comparison (approx. in kg/m³)

STAB-light gabon or similar 320	MDF	Chipboard	OSB	Blockboard (ST)	PX elements
	850	670	580	450	250



Dividing wall structures



Reliable connections



Free-form blank cutting

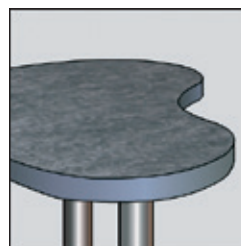
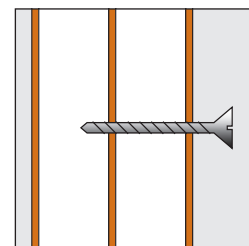


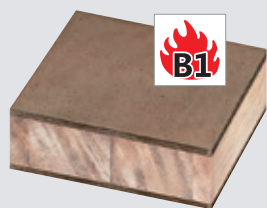
Table designs



Reliable screw connections  
(5-ply structure)

# SWL Light – special compositions

## SWL Light | Fire safety boards



**STAB-light HDF B1**



**STAE-light HDF B1**

### Product designation

### Crossband

HDF B1

HDF B1

### Core material

Finger-jointed, core material sanded on both sides, made of albasia

Fully-bonded albasia rotary cut veneers with upright growth rings

### Standard formats (mm)

5,200 x 2,070  
2,600 x 2,070

5,200 x 2,070  
2,600 x 2,070

### Thicknesses (mm)

13 - 38

13 - 38

### Specific weight (kg/m³)

Approx. 530 at 19 mm  
Approx. 420 at 38 mm

560 at 19 mm  
460 at 38 mm

### Fire protection class (acc. to DIN EN 13501-1)

C-S2,d0

C-S2,d0

## SWL Light | special compositions



**Painter's board**



**CrossCore light**

STAB-light Gabon or similar with primer paper (150 g)

Finger jointed, core sanded on both sides, glued crosswise

### Weight (kg/m³)

Approx. 320

### Weight (kg/m³)

ca. 410

### Standard formats (mm)

5,200 x 2,050  
2,600 x 2,050

### Standard formats (mm)

5,200 x 2,070

### Thicknesses (mm)

13 - 38  
(> 40 mm on request)

### Thicknesses (mm)

38 | 40 | 50



**Balsa board  
Lightwood HDF**

Core layer end grain Balsa

### Weight (kg/m³)

ca. 360

### Standard formats (mm)

2,070 x 5,200  
2,070 x 2,600

### Thicknesses (mm)

19 | 38



**Sandwich board  
lamin Balsa HDF**

Core layer lamin board spruce / end grain Balsa/lamin board spruce

### Weight (kg/m³)

ca. 365

### Standard formats (mm)

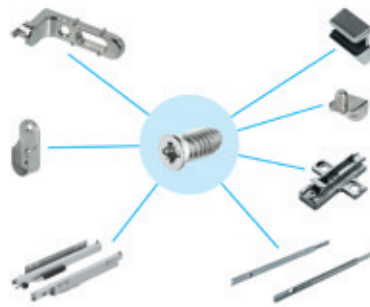
2,070 x 5,200  
2,070 x 2,600

### Thicknesses (mm)

38

# SWL Light – lightweight solutions

## SWL furniture made of PX elements – processing examples



### PX elements

Häfele iXconnect series,  
Fischer GKM

#### Connections

#### Applied pressure

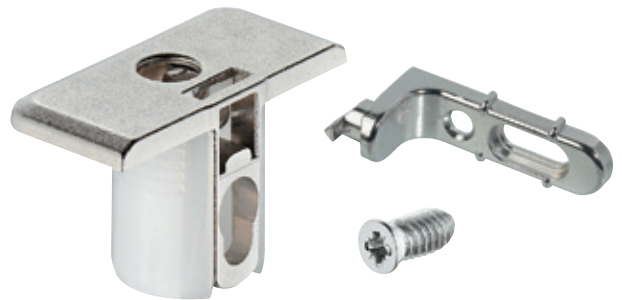
Max. 3 kg/cm<sup>2</sup>  
(not more than 60 °C)

#### Bonding

IF20 (other bonding  
available)

#### Bevelling

- Observe top pressure
- Standard temperature
- Min. edge thickness: 2 mm



## SWL exhibition stand construction with ingenious lightweights!



STAB-light gabon or  
similar: finger-jointed  
for round tables



PX HDF: for table  
designs, edge cut out  
for illustration



STAB-light HDF:  
70s column shelf  
system (carcasses);  
Door+ Table: shelves



Painter's board:  
shelves and interior  
constructions



Connections with  
Keku® fittings

