



**SWL Tischlerplatten
Betriebs-GmbH**

Lippstädter Str. 4
D - 33449 Langenberg

Phone +49 (0) 52 48 15 09 - 0

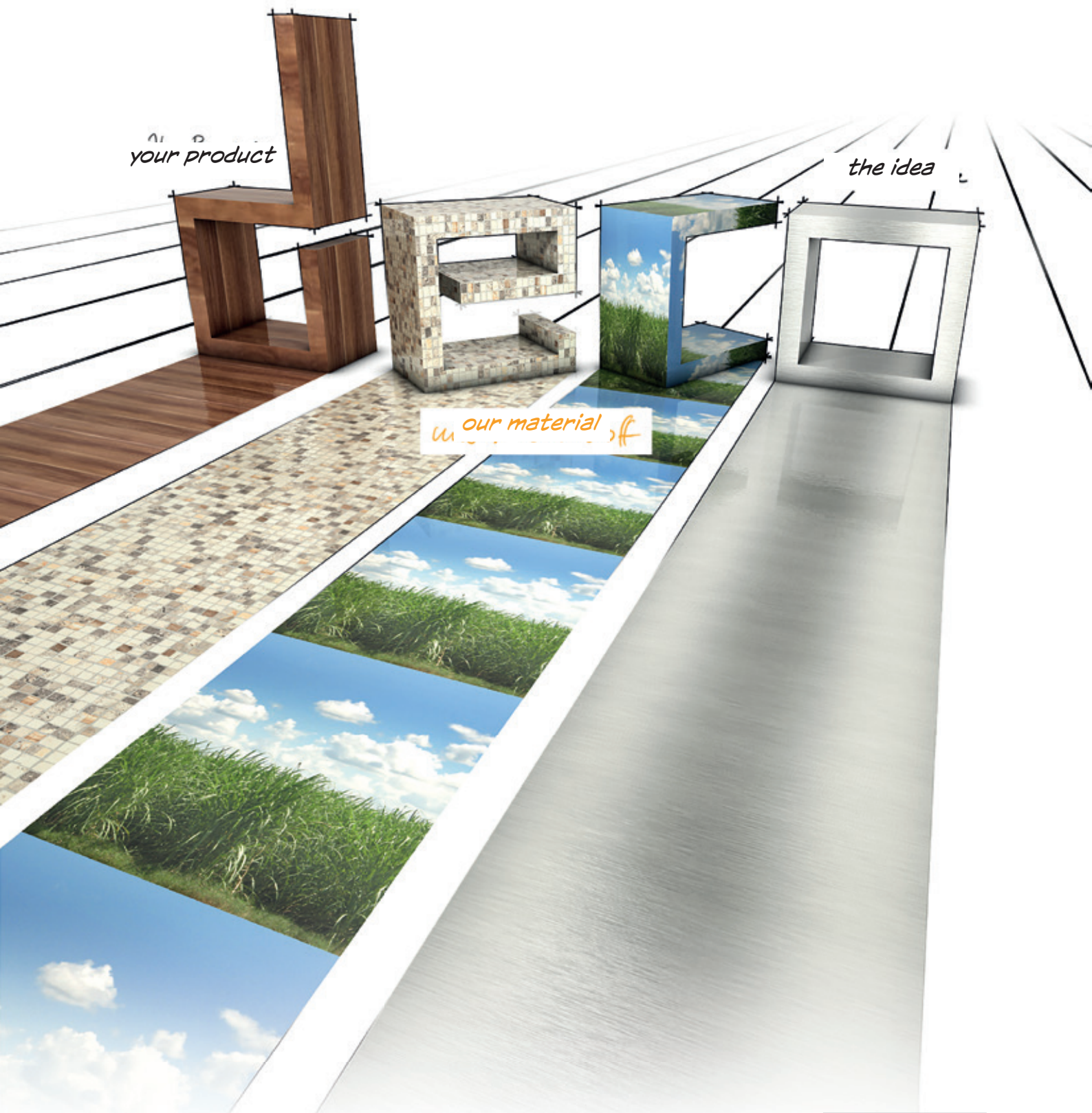
Fax +49 (0) 52 48 15 91

Internet www.s-w-l.com

E-mail info@s-w-l.com



Your specialist supplier



your product

the idea

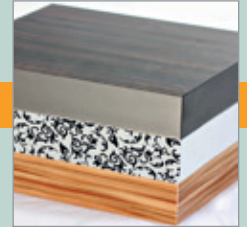
our material

Materials and designs for the professionals

SWL Professionals

... exclusively for experts



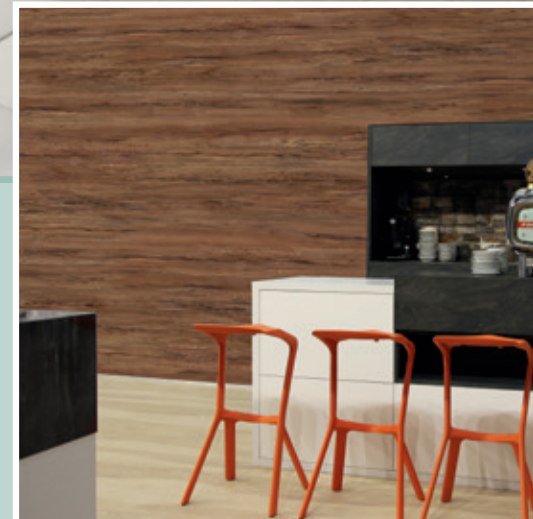


Finished surfaces and decors

These substrates can also be finished with top-quality surfaces – from gloss to ultramatt, from smooth to pearl structure.

We provide a wide range of HPL decors, colours and structures to meet virtually any request.

Various substrates can also be produced melamine-faced in colour match.



SWL Professionals – professional materials

Our “Professionals” products provide producers a select range of high-quality, multifunctional substrates based on solid and lightweight core materials.



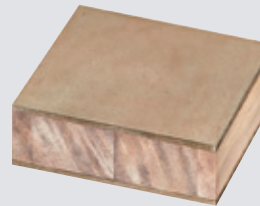
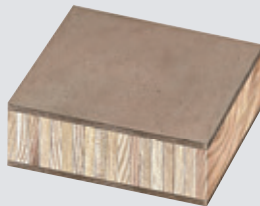
These innovative materials impress with

- High content of solid wood
- Outstanding resilience
- Surface stability
- Low weight
- Low emission

Substrate boards and sandwich elements









Designation	STAB Stabil	STAB Span	STAE Deluxe
Crossband	Rotary cut veneer HDF	Thin chipboard	Rotary cut veneer, 3 mm
Standard formats (mm)	2800x1300 3050x1300 mm *	2800x1300 3050x1300 mm *	2800x1300 3050x1300 mm *
Max. format (mm)	On request	On request	On request
Thicknesses (mm)	15 18 24	15 18 24	15 18 24
Comments	Available as sandwich board or with primer paper (150 g) * On request	Available as sandwich board or with primer paper (150 g)	Available as sandwich board or with primer paper (150 g)





Designation	STAE HDF	ST-light HDF	CrossCore HDF (poplar)
Crossband	HDF	HDF	HDF
Standard formats (mm)	2800x1300 3050x1300 mm *	2800x1300 3050x1300 mm *	3050x1300
Max. format (mm)	On request	On request	On request
Thicknesses (mm)	15 18 24	15 18 24	40
Comments	Available as sandwich board or with primer paper (150 g) * On request	Available as sandwich board or with primer paper (150 g)	Available as sandwich board or with primer paper (150 g)

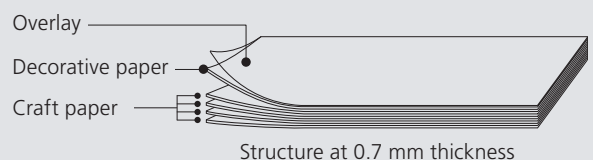
Laminates

Quality features

-  Lightfast according to EN 438
-  Heat resistant up to 230° C
-  Impact resistant according to EN 438
-  Water vapor resistant according to EN 438
-  Resistant to customary household cleaning agents
-  Suitable for contact with food according to EN 1186 and EN 13130

-  Abrasion resistant according to EN 438
-  Scratch resistant according to EN 438

Product structure



SWL Professionals – professional materials

Melamine-faced blockboards



Designation	STAB Span Melamine	STAB FPM deco	STAE Span Melamine	STAE FPM deco
Crossband	Thin chipboard	Fibreboard	Thin chipboard	Fibreboard
Standard formats (mm)	5600 2800x2070	5600 2800x2070	5600 2800x2070	5600 2800x2070
Thicknesses (mm)	16-28	16-28	16-28	16-28
Comments	See range of decors (packs of 10 20 pieces), structure: smooth or pearl, a range of 20 plain-coloured decors	See range of decors (packs of 10 20 pieces), structure: smooth or pearl, a range of 20 plain-coloured decors	See range of decors (packs of 10 20 pieces), structure: smooth or pearl, a range of 20 plain-coloured decors	See range of decors (packs of 10 20 pieces), structure: smooth or pearl, a range of 20 plain-coloured decors

Melamine-faced blockboards with wood, fantasy and plain-coloured decors



Designation	STAB SPM deco	STAE SPM deco
Crossband	Thin chipboard	Thin chipboard
Standard formats (mm)	3100x1300	3100x1300
Max. format (mm)	4100x1310	4100x1310
Thicknesses (mm)	16 - 28	16 - 28
Comments	Available as sandwich board or with primer paper (150 g), approx. 150 decors available, min. amount/decor: 50 m ²	Available as sandwich board or with primer paper (150 g), approx. 150 decors available, min. amount/decor: 50 m ²

Structures available (SPM)



Parchment



Crystal



Colin



Pore F



Pore D



Pore EB



Fine laid paper



Mat

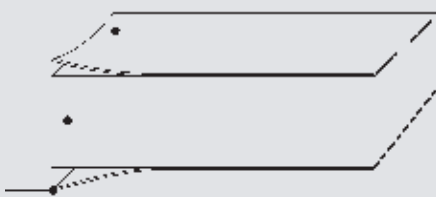
Directly faced elements

Product structure







Decorative paper

Chipboard or fibreboard

Decorative paper



Quality features

-  Resistant to wear according to EN 14322
-  Stain resistant
-  Lightfast according to ISO 4892
-  Impact resistant according to EN 14322
-  Water vapor resistant according to ISO 14322
-  Flame retardant according to EN 14322

Extraction of range of colours | more than 200 decors available

Plain decors



Processing

We would be pleased to process boards for you and can offer you virtually any processing steps up to completed furniture:

- Cutting and finishing
- Edging with various materials
- Drilled holes
- Milling
- Picking

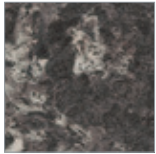
Wood decors



SWL Professionals – professional materials

Finishing and processing

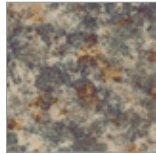
Stone and fantasy decors



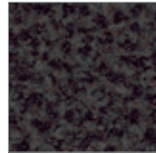
FS 170



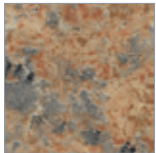
FS 760



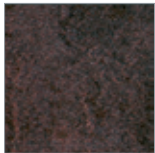
G 169



GN 113



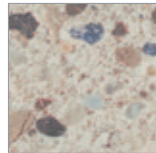
GT 479



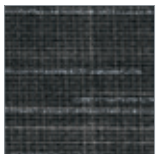
H 674



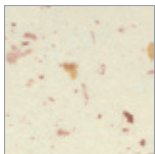
JK 583



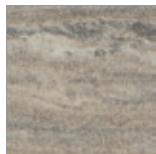
KS 360



L 441



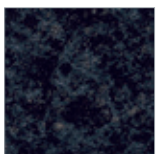
LU 736



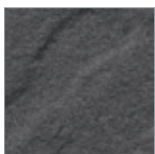
M 372



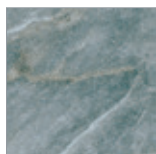
MK 171



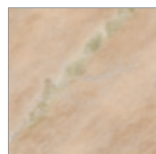
RE 128



SC 475



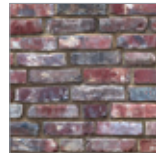
SL 843



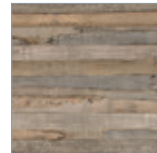
SL 723

Digital print

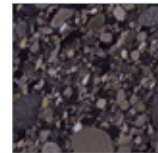
Digital printing offers particularly impressive and manifold possibilities – here imagination knows no limits.



D 2111



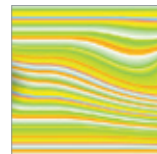
D 2107



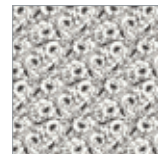
DKS 743



D 2109



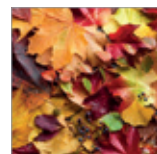
DS 862



AK 058



Bi 791



D 4101



D 3120

