

Ingenious lightweights

**SWL** Light

Weighty tasks... solved lightly



## SWL Light | finger-jointed light blockboards



For challenging performance requirements in various fields of application!



Blockboards made of the light and rapidly growing wood type **albasia falcata** guarantee absolutely smooth surfaces with low weight, high strength and screw withdrawal resistance!



### SWL STAB-light | the unique lightweight blockboard

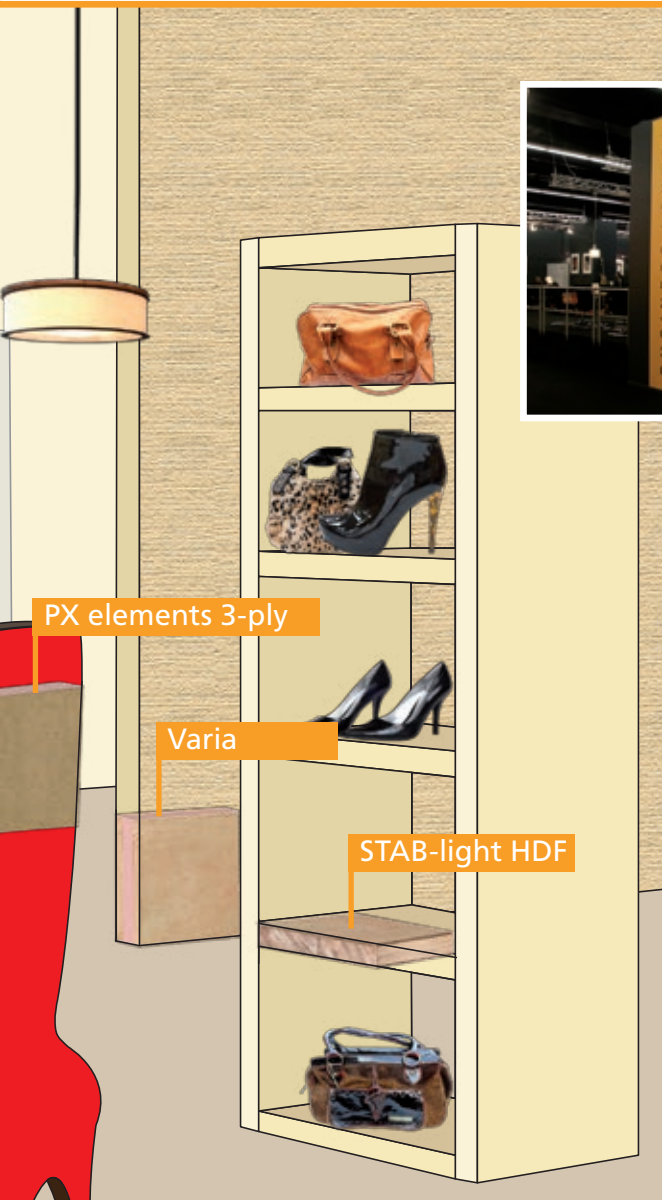
- Finger-jointed
- Strong
- Screw withdrawal resistant



# SWL Light – ingenious lightweights

SWL PX elements – sandwich elements with polystyrene core

Completely new possibilities in exhibition, theatre and stage construction based on massive weight reduction and extremely easy handling!



## SWL PX elements | the lightweight material with impressive characteristics

- Universal use
- Problem-free processing

The extremely light sandwich elements can be processed easily using conventional machines (edging, veneering).

Individual shaping is problem-free particularly due to the large board formats.

We also provide versions with frames.

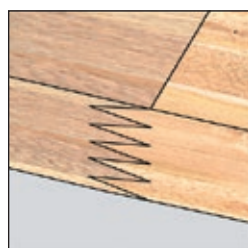




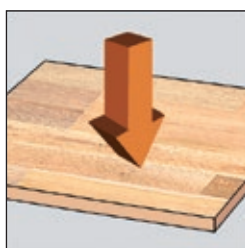
## SWL Light | finger-jointed light blockboards

Product designation	STAB-light gabon or similar	STAB-light HDF	STAB-light hard fibre
Crossband	gabon or similar	HDF (2.3 or 3.5 mm)	Hard fibre board (paintable)
Core material	Finger-jointed, core material sanded on both sides, made of albasia	Finger-jointed, core material sanded on both sides, made of albasia	Finger-jointed, core material sanded on both sides, made of albasia
Standard formats (mm)	2070 x 5600	5600 x 2070	5600 x 2070
Max. press format (mm)	On request	On request	On request
Thicknesses (mm)	16 - 38	16 - 38	16 - 38
Specific weight (kg/m <sup>3</sup> )	Approx. 320	Approx. 460 at 19 mm Approx. 420 at 38 mm	Approx. 460 at 19 mm Approx. 420 at 38 mm

Product designation	STAE-light	STAE-light HDF
Crossband	gabon or similar (2.3 or 3.5 mm)	HDF (3.5 mm)
Core material	Fully-bonded albasia rotary cut veneers with upright growth rings	Fully-bonded albasia rotary cut veneers with upright growth rings
Standard formats (mm)	2070 x 5600	5600 x 2070
Thicknesses (mm)	13 - 38	13 - 38
Specific weight (kg/m <sup>3</sup> )	Approx. 350	Approx. 530



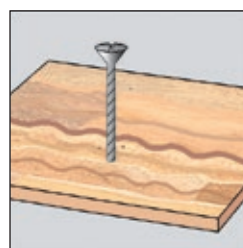
Finger-jointed core material



High strength (approx. 4,300 N/mm<sup>2</sup>)



Top swelling characteristics (2.3 %)



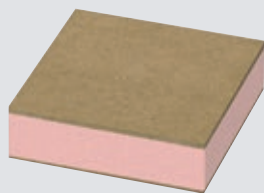
Unscrewing resistant (approx. 1,300 N/mm<sup>2</sup>)



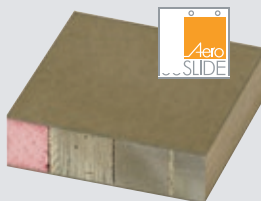
Outstanding moulding properties

# SWL Light – lightweight materials

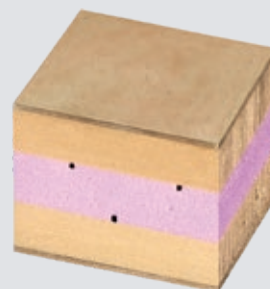
## SWL PX elements – sandwich elements with polystyrene core



**PX elements 3-ply**



**AeroSlide**  
(for large-size sliding doors)



**Sandwich board  
Varia**

HDF

Polystyrene: 300 - 500 kPa  
compression strength  
(on request)

5200 x 2070

On request

19 - 100

Approx. 250 - 150

HDF

Polystyrene:  
frame made of albasia and  
laminated wood

Individual

On request

38

Approx. 9 kg/m<sup>2</sup>

HDF

Core XPS  
Core layer lamin board  
spruce

5600 x 2070

On request

40 | 50 | 60

Approx. 340 - 240

### Weights PX elements (approx. in kg/m<sup>2</sup>)

19 mm	19 mm*	22 mm	22 mm*	25 mm	28 mm	32 mm	35 mm	38 mm	45 mm
5.07	3.36	5.19	3.48	5.31	5.43	5.59	5.71	5.83	6.11

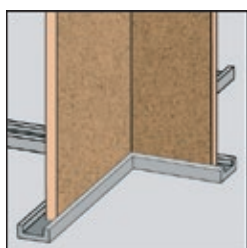
\* 2.3 mm HDF

### Weights STAB Light gabon or similar and STAB Light HDF (approx. in kg/m<sup>2</sup>)

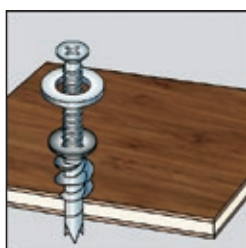
STAB-light gabon or similar STAB-light HDF	16 mm	19 mm	22 mm	25 mm	28 mm	30 mm	38 mm	40 mm	42 mm
	5.12	6.08	7.04	8.00	8.96	9.60	12.16	12.80	13.44
	8.80	9.73	10.67	11.63	12.60	13.20	15.77	16.40	17.01

### Materials in weight comparison (approx. in kg/m<sup>3</sup>)

STAB-light gabon or similar 320	MDF	Chipboard	OSB	Blockboard (ST)	PX elements
	850	670	580	450	250



Dividing wall structures



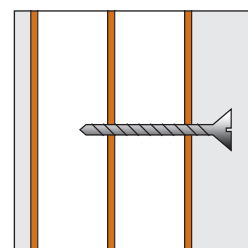
Reliable connections



Free-form blank cutting



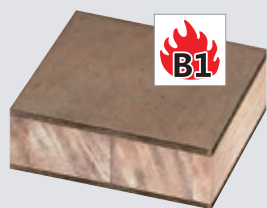
Table designs



Reliable screw connections  
(5-ply structure)

# SWL Light – special compositions

## SWL Light | Fire safety boards



**STAB-light HDF B1**



**STAE-light HDF B1**

### Product designation

### Crossband

HDF B1

HDF B1

### Core material

Finger-jointed, core material sanded on both sides, made of albasia

Fully-bonded albasia rotary cut veneers with upright growth rings

### Standard formats (mm)

5600 x 2070

5600 x 2070

### Thicknesses (mm)

16 - 38

16 - 38

### Specific weight (kg/m³)

Approx. 530 at 19 mm  
Approx. 420 at 38 mm

560 at 19 mm  
460 at 38 mm

### Fire protection class (acc. to DIN EN 13501-1)

C-S2,d0

C-S2,d0

## SWL Light | special compositions



**Painter's board**



**CrossCore light**

STAB-light Gabon or similar with primer paper (150 g)  
also available with hdf

Finger jointed, core sanded on both sides, glued crosswise,  
face HDF

### Weight (kg/m³)

Approx. 320

### Weight (kg/m³)

Approx. 410

### Standard formats (mm)

5600 x 2050

### Standard formats (mm)

5600 x 2070

### Thicknesses (mm)

16 - 38  
(> 40 mm on request)

### Thicknesses (mm)

38 | 40



**Balsa board  
Lightwood HDF**



**Sandwich board  
lamin Balsa HDF**

Core layer end grain Balsa

Core layer lamin board spruce / end grain Balsa/lamin board spruce

### Weight (kg/m³)

Approx. 360

### Weight (kg/m³)

Approx. 365

### Standard formats (mm)

2070 x 5200

### Standard formats (mm)

2070 x 5200

### Thicknesses (mm)

19 | 38

### Thicknesses (mm)

38

# SWL Light – lightweight solutions

## SWL furniture made of PX elements – processing examples



### PX elements

Häfele iXconnect series,  
Fischer GKM

#### Connections

#### Applied pressure

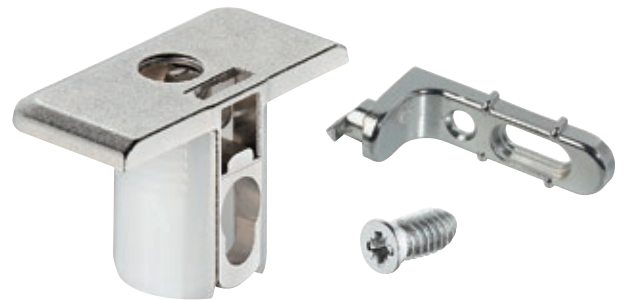
Max. 3 kg/cm<sup>2</sup>  
(not more than 60 °C)

#### Bonding

IF20 (other bonding  
available)

#### Bevelling

- Observe top pressure
- Standard temperature
- Min. edge thickness: 2 mm



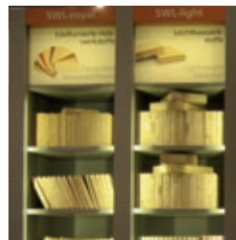
## SWL exhibition stand construction with ingenious lightweights!



STAB-light gabon or  
similar: finger-jointed  
for round tables



PX HDF: for table  
designs, edge cut out  
for illustration



STAB-light HDF:  
carcasses  
and shelves



Painter's board:  
shelves and interior  
constructions



Connections with  
Keku® fittings





## **SWL Tischlerplatten Betriebs-GmbH**

Lippstädter Str. 4  
D - 33449 Langenberg

Phone +49 (0) 52 48 15 09 - 0

Fax +49 (0) 52 48 15 91

Internet [www.s-w-l.com](http://www.s-w-l.com)

E-mail [info@s-w-l.com](mailto:info@s-w-l.com)



Your specialist supplier

---